



Replacing Ceramic Tiles

A guide to help you find the right flooring to replace your ceramic tiles.



INTRODUCTION

At Fowlers Carpets + Blinds you can browse a wide range of products, receive the best technical advice, and high quality customer service. We work with you to select and match the style and colour of your flooring with your window coverings and other selections in your home. We help you achieve the look you have always wanted.

Fowlers Carpets + Blinds buys flooring in bulk and we pass on the savings to our customers. Fowlers Carpets + Blinds one of the lowest cheapest providers of flooring and window coverings in Western Sydney, Macarthur, Southern Highlands and South Coast.

We hope this guide helps you to feel informed about the flooring options available to you when you want to replace your existing cermaic floor.

If you need help call us today:

02 46461812

Or visit us at:

11 Exchange Parade Narellan



We are here to help.
Call us today:
02 46461812
Visit us today:
11 Exchange Parade Narellan

HOW THIS GUIDE WORKS

This guide has been designed to help you to know the options that are available to you if you would like to replace your existing ceramic tile floor.

Broadly speaking there are two main options:

- 1. Remove the existing ceramic tiles and then install a new floor
- 2. Install a new floor over the ceramic tiles.

This guide will take you through the implications and costs associated with each option so you can make an informed decision about the best option for your home.

Our expert team is available to help guide you through the buying process so please contact us at 02 46461812.

Note: All prices quoted in this guide are product only

This guide will cover the two main options:

Removing the existing tiles



Going over the existing tiles



Benefits of replacing tiles with hard flooring

1.



Many Aussie families are deciding to replace their ceramic tiles with other hard flooring options such as luxury vinyl tiles or planks, laminate and engineered timber. They are making this decision for the following reasons. Hard Flooring is:

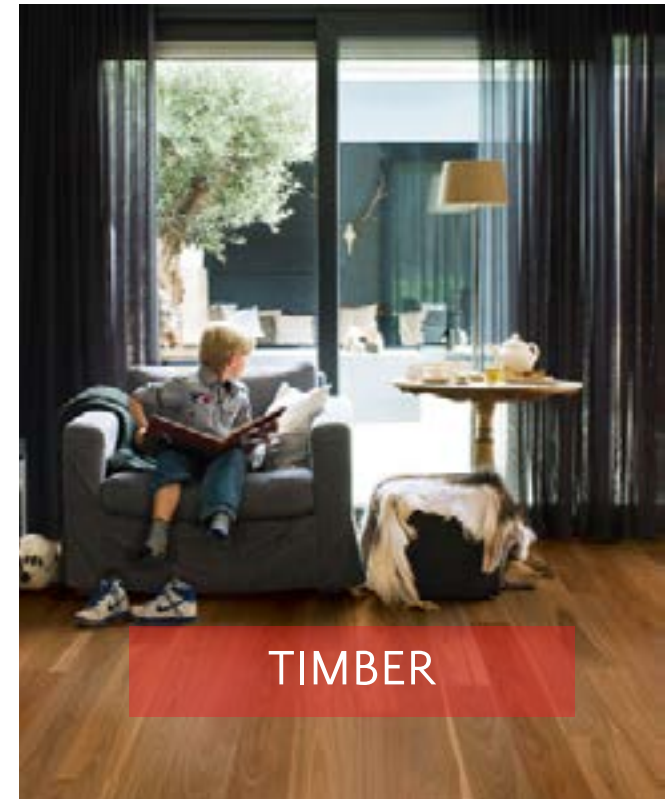
- ✓ Soft and more comfortable under foot
- ✓ Durable and long lasting
- ✓ Stain and dirt proof
- ✓ Warmer in winter
- ✓ More stylish look and feel
- ✓ Solves cracked/damaged tile issues
- ✓ Easier to keep clean - no dirty grout
- ✓ Less maintenance and better hygiene



What types of flooring can be installed?

2.

The following types of flooring can be installed over ceramic tiles or instead of ceramic tiles if they have been removed. Further in the guide we will discuss the implications and considerations for each type of flooring.



Two Options - Remove or go over

3.

There are two main options to consider when you have ceramic tiles in your home and you are looking to change your floor. You can:

1. OPTION ONE: REMOVE EXISTING TILES

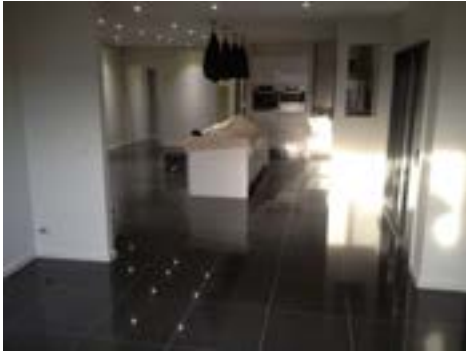


2. OPTION TWO: GO OVER EXISTING TILES



1. Removing existing tiles

4.



What is involved?

We recommend that you engage a professional tile removal contractor. They have all the tile removal machinery that is required to do this type of work. In most cases they also have dust extraction equipment that can make the process relatively dust free. You can obtain an estimate online or contractors can come to your home and give you a quote

We have provided website links to some contractors who offer this service in and around the Sydney metropolitan area.

- All Striped
- Hammer & Grind

We recommend that the company you select should **also grind the floor after the tiles have been removed**. This will give the floor a smoother, more even finish.

How much it costs

The cost can depend on how you engage but a rough estimate is up to \$35 per square metre. Minimum charges do apply.



1. Removing existing tiles cont.

5.



What Floor Prep is required?

Once the existing tiles are removed Fowlers Carpets + Blinds needs to assess whether any additional floor prep is required. Sometimes when the tiles are removed the sub floor needs to be ground to remove bumps, glue etc. Sometimes holes are left in the slab.

If the tile removal company has not ground the floor with a concrete grinder then we may need to grind the floor. We might also need to use a self leveling product called Ardit to make the floor smoother, more level and fill in gaps and holes.

Ardit is a cement based floor leveler. We apply ardit in varying ways. The main ways are:

1. Skim Coat - which means that we apply a small amount of the ardit to the floor to fill in small gaps or tighter grout joints. This method is more targetted at making the floor smoother.
2. Flood Coat - which means that we apply approximately 3mm (+ or-) of ardit across the whole floor. This will remove most indentations caused by deep grout or rough tiles. This method is done to achieve a more level floor.



The function of ardit is to create a smoother more level floor that is satisfactory for the installation of other flooring products. It provides a clean new surface that will ensure better adhesion when products are glued to it.

Please note that even after the application of this product in some cases there will still be some undulations in your floor. Your floor will not be “perfectly level”. Your floor is now ready for the hard flooring product you have selected.

2. Going over the existing tiles

6.



What are the main considerations?

If you are going over your existing tiles you need to remember that they will be the base of your installation. They need to be sound and secure - no loose or drummy tiles.

1. Tile surface - Slate

Slate is usually too uneven and can often split off into sheets that make it unstable to glue anything onto it. Because they are so uneven it costs more to level it and we recommend that it is removed.

2. Tile Surface - Smooth Porcelain Tiles

Hard flooring can be installed over the top. Some floor prep will be required. Any cracked tiles need to be removed and ardit used to fill the gaps.

3. High Points in the tiles

High points in the tiles can be smoothed with a diamond grinder then levelled with a skim coat or flood coat of ardit.

4. Deep or wide grout

If your tiles have deep or wider grout, two coats of ardit may be required to ensure to level finish.

If floor prep is required by the product being installed, you may need:

Skim coat - to apply a small amount of ardit over the existing tiles to fill in grout areas.

Flood Coat - to apply a large amount of ardit - 3mm over the surface area to create a top layer that is more level than the existing tiles

Resurfacing - i.e. a new concrete slab - not discussed in this guide

2. Going over the existing tiles

CHECK
NEW FLOOR
LEVEL

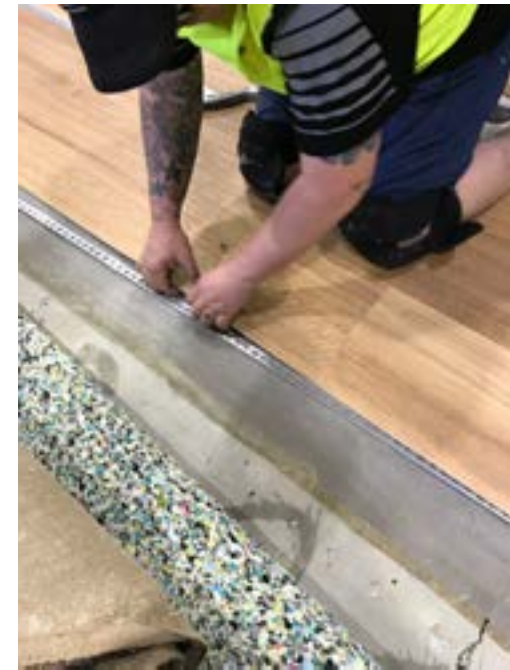
7.

There are other considerations if you decide to go over tiles.

The height of your floor will change as a result and we recommend that you work through the following checklist to ensure you understand the implications of this:

- The height of the new floor could create a step from the existing flooring onto the new flooring. For example, under carpeted areas we may need to supply a carpet ramp that will make the height change less noticeable.
- Cupboards and bench tops will seem lower because the new floor level is higher. Taller people may want to consider their choices here.
- Door clearance for pantry doors and other doors may not be enough – Doors maybe able to be resized or consider the most applicable product to you situation
- Clearance for appliances like an oven, fridge, dish washer – will they fit back into their positions and is there proper ventilation requirements from the appliance manufacturer?

- Issues with Sliding Doors



Vinyl Plank to carpet transition being installed

2. Going over the existing tiles

CHECK
ISSUES WITH
SKIRTING

8.

There are other considerations if you decide to go over tiles.

It is also important to consider the impact the new flooring has on your skirting boards. With skirting you have three options:

Option 1: Leave the skirting as is

We can leave the skirting as.

- For Luxury Vinyl Tile/Planks -the product can be installed flush with the skirting as no gap is required for expansion and contraction. No scotia is required.
- For engineered timber products like Hybrid, Laminate, Aussie and Oak then scotia will be required. Scotia effectively hides the gaps we need to leave between the skirting and the product to allow for expansion and contraction. Note that your skirting boards need to be 19mm thick
- If scotia is required it is important to check the height of the new floor and the scotia to make sure you still have some skirting board showing for visual effect.



2. Going over the existing tiles



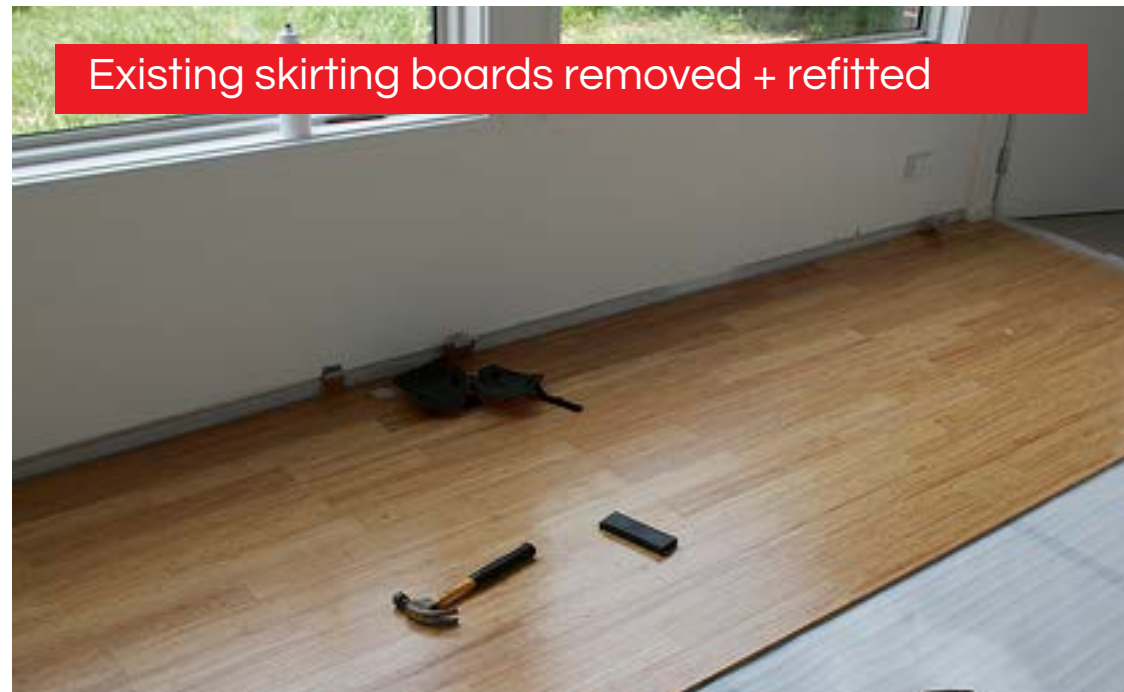
There are other considerations if you decide to go over tiles.

It is also important to consider the impact the new flooring has on your skirting boards. With skirting you have three options:

Option 2: We can remove your existing skirting and reinstall it

- This option could apply when you select a “Engineered Floor” such as Laminate, Oak, or Australian hardwood floors.
- This method allows us to leave the gap need for expansion next to the wall and then the skirting board to be reinstall over the gap so no scotia is required.
- This method works best when your new flooring areas is being installed in separate rooms. This is because we need to take into consideration the height of skirting in other rooms to make sure they are all level. If the new floor is being installed in an open plan area with connections to other rooms you may need to remove the tiles if we can't the flooring levels the same across the space because you don't want your skirting at different heights.

- The removal and refitting of skirting does cause marking to the skirting. The skirting will need to be painted by a yourself or a professional after fitting (we do not provide this service).



2. Going over the existing tiles

CHECK
ISSUES WITH
SKIRTING

10.

There are other considerations if you decide to go over tiles.

It is also important to consider the impact the new flooring has on your skirting boards. With skirting you have three options:

Option 3: We can install new skirting

- We can remove it and install new skirting around the area that is being replaced with new flooring.
- This option is recommended if your existing skirting is old, or less than 100mm in height and less than 19mm in depth.
- Again consideration needs to be given to the level of the skirting across the house and interconnecting rooms,
- This is an additional expense and pricing can vary depending on your choice of skirting.
- The skirting will need to be painted by a yourself or a professional after fitting (we do not provide this service).



LVP - Polaris 2.5mm - Godfrey Hirst

11.



We recommend Polaris – luxury vinyl plank product by Godfrey Hirst. Here is why:



- ✓ Durable top layer to resist scratching
- ✓ Easy to maintain
- ✓ Water resistant
- ✓ Beautiful timber looks
- ✓ Micro bevel edge to improve aesthetics
- ✓ An number of install options including DIY
- ✓ Affordable

PRICE GUIDE
Starting from
\$25 SQM

**Recommended
Install Method**

Vinyl Plank /Tiles – 2.5mm Direct Stick Method – with hard set glue

Option 1: Removing Tiles (with grinding) – Product + Flood Coat Ardit

Option 2: Over Tiles – Smooth – Product + Flood Coat Ardit

Option 3: Over Tiles – Uneven Tiles e.g Slate – **Not recommended**

These are standard options only. Please note that in all cases a Fowlers Consultant needs to come and perform a site inspection and check measure before the install method is confirmed.

LVP - Vega 5mm - Godfrey Hirst

12.



We recommend Vega luxury vinyl plank product by Godfrey Hirst. Here is why:



- ✓ Durable top layer to resist scratching
- ✓ Easy to maintain
- ✓ Water resistant
- ✓ Beautiful timber looks
- ✓ Micro bevel edge to improve aesthetics
- ✓ An number of install options including DIY
- ✓ Affordable
- ✓ 0.5mm wear layers

PRICE GUIDE

Starting from
\$42 SQM

Recommended
Install Method

Vinyl Plank /Tiles - 5.0mm Easy Lay Method - with pressure sensitive glue

Option 1: Removing Tiles (with grinding) - Product + Skim Coat

Option 2: Over Tiles - Smooth - Product + Skim Coat

Option 3: Over Tiles - Uneven Tiles e.g Slate - Product + Flood Coat

These are standard options only. Please note that in all cases a Fowlers Consultant needs to come and perform a site inspection and check measure before the install method is confirmed.

LVP- Looselay Longboards by Karndean

13.



We recommend Looselay Longboards by Karndean. Here is why:

- ✓ **Water Proof**
- ✓ **Kid Friendly**
- ✓ **Pet Friendly**
- ✓ **Lifetime Warranty**
- ✓ **Durable**
- ✓ **Comfortable Under Foot**
- ✓ **Low maintenance**
- ✓ **Realistic Designs**
- ✓ **100% Recyclable**



PRICE GUIDE
Starting from
\$63 SQM

**Recommended
Install Method**

Vinyl Plank /Tiles – 5.0mm Loose Lay Method – with pressure sensitive glue

Option 1: Removing Tiles (with grinding) – Product + Skim Coat

Option 2: Over Tiles – Smooth – Product + Skim Coat

Option 3: Over Tiles – Uneven Tiles e.g Slate – Product + Flood Coat

These are standard options only. Please note that in all cases a Fowlers Consultant needs to come and perform a site inspection and check measure before the install method is confirmed.

LVP - Orion Hybrid 8mm - Godfrey Hirst

14.



We recommend Orion Hybrid Luxury Vinyl Planks by Godfrey Hirst. Here is why:



- ✓ Durable top layer to resist scratching
- ✓ Easy to maintain
- ✓ Water resistant
- ✓ Beautiful timber looks
- ✓ Micro bevel edge to improve aesthetics
- ✓ An number of install options including DIY
- ✓ Affordable
- ✓ 0.3 and 0.5mm wear layers

PRICE GUIDE
Starting from
\$65 SQM

**Recommended
Install Method**

Vinyl Plank - Hybrid - 5.0mm Click Method

Option 1: Removing Tiles (with grinding) - Product + Skim Coat + Scotia

Option 2: Over Tiles - Smooth - Product + No prep + Scotia

Option 3: Over Tiles - Uneven Tiles e.g Slate - Product + Flood Coat + Scotia

These are standard options only. Please note that in all cases a Fowlers Consultant needs to come and perform a site inspection and check measure before the install method is confirmed.

Laminate - Oakleaf by Preference Floors

15.



We recommend Oakleaf Laminate by Preference Floors. Here is why:

- ✓ **Wide plank visuals, long boards**
- ✓ **Realistic timber surface for natural look**
- ✓ **Lifetime Structural Warranty**
- ✓ **Sturdy for every day wear - 20 year finish guarantee**
- ✓ **Oak + Australian Timber colours**
- ✓ **Warmth and Character**
- ✓ **Resists scratched**

PRICE GUIDE
Starting from
\$20 SQM

**Recommended
Install Method**

Laminate - 8.0mm Click Method

Option 1: Removing Tiles (with grinding) - Product + Skim Coat + Underlay + Scotia
Option 2: Over Tiles - Smooth - Product + No prep + 2mm Underlay + Scotia
Option 3: Over Tiles - Uneven Tiles e.g Slate - Product + Float Coat + 2mm Underlay + Scotia

These are standard options only. Please note that in all cases a Fowlers Consultant needs to come and perform a site inspection and check measure before the install method is confirmed.

Timber - Fiddleback by Preference Floors

16.



We recommend Fiddleback Timber Floors by Preference Floor. Here is why:

- ✓ **Extra Solid**
- ✓ **Extremely stable with excellent wear resistance**
- ✓ **Impact resistant, durable and stable**
- ✓ **Available in Spotted Gum and Blackbutt**
- ✓ **Smooth and brushed finish available**
- ✓ **20 year finish warranty and lifetime structural warranty**
- ✓ **Click floating installation for fast easy install**
- ✓ **Micros bevel edge for realistic look**

PRICE GUIDE

Starting from
\$65 SQM

**Recommended
Install Method**

Timber - 14mm Click Method

Option 1: Removing Tiles (with grinding) - Product + Skim Coat + Underlay + Scotia

Option 2: Over Tiles - Smooth - Product + No prep + 2mm Underlay + Scotia

Option 3: Over Tiles - Uneven Tiles e.g Slate - Product + Float Coat + 3mm Underlay + Scotia

These are standard options only. Please note that in all cases a Fowlers Consultant needs to come and perform a site inspection and check measure before the install method is confirmed.

Timber - Project Oak by Godfrey Hirst

17.



We recommend Project Oak Timber Floor by Godfrey Hirst. Here is why:

- ✓ **Extra Solid**
- ✓ **Extremely stable with excellent wear resistance**
- ✓ **Impact resistant, durable and stable**
- ✓ **Available in European Oak**
- ✓ **Micro bevel edge**
- ✓ **15 year finish warranty and 15 year structural warranty**
- ✓ **Click floating installation for fast easy install**
- ✓ **Matt finish**

PRICE GUIDE

Starting from
\$65 SQM

**Recommended
Install Method**

Timber - 14mm Click Method

Option 1: Removing Tiles (with grinding) - Product + Skim Coat + Underlay + Scotia

Option 2: Over Tiles - Smooth - Product + No prep + 2mm Underlay + Scotia

Option 3: Over Tiles - Uneven Tiles e.g Slate - Product + Float Coat + 3mm Underlay + Scotia

These are standard options only. Please note that in all cases a Fowlers Consultant needs to come and perform a site inspection and check measure before the install method is confirmed.

Price Comparison

The purpose of this chart is to give you a rough estimation of the price differences between the three options. These prices are a guide only and a Fowlers Flooring consultant will need to confirm the details of your project.

	Godfrey Hirst Polaris DS	Godfrey Hirst Vega	Karndean Longboard	Godfrey Hirst Orion Hybrid	Oakleaf Laminate -8mm	Fiddleback Timber	Project Oak Timber
Removing Tiles + Grinding Floor	\$110.00	\$107.00	\$128.00	\$129.50	\$87.50	\$132.50	\$132.50
Going Over Tiles - Smooth Tiles	\$80.00	\$77.00	\$98.00	\$94.50	\$52.50	\$97.50	\$97.50
Going Over Tiles - Rough Tiles	Not Available	\$97.00	\$118.00	\$94.50	\$52.50	\$97.50	\$97.50

Our Floor Coverings Team

How to make the right decision for your home

Given that there are a number of options it can be tricky to know which is the right decision for your home. This is where we can help. One of our experienced consultants will come to your home and give you expert advice.



Flooring Expert: David

David has over 25 years experience in flooring coverings. David is our technical expert with deep expertise in all areas of flooring.



Flooring Expert: Clint

Clint has over 20 years experience in flooring coverings. Clint is an expert in all aspects of flooring and works closely with our customers.



Flooring Expert: Clare

Clare is new to the Fowlers team yet she works tirelessly with our customers to find them the right flooring for their homes.



Flooring Expert: Damien

Damien has extensive experience selling and installing flooring products. Damien loves helping our customers select the perfect flooring.

Our Window Coverings Range



Vertical Blinds



Venetian Blinds



Roman Blinds



Vision/Multi Shade Blinds



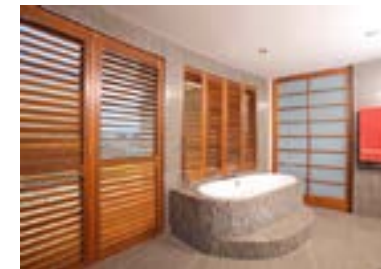
Panel Glides



Cellular Blinds



Fauxwood Shutters



Timber Shutters



Zip Screens



Alpha Awning



Folding Awning



Traditional Awnings



CARPET



LUXURY VINYL TILES



BAMBOO



LAMINATE



TIMBER

PACKAGE FLOORING +
WINDOW COVERINGS
AND SAVE!



CALL US NOW

Or Visit Us to see our huge range of family friendly flooring. Our expert team is on call to advise you.

02 46461812